



PAKISTAN NOTICES TO MARINERS

WEEKLY EDITION 14

Notice: 62 – 68(T)/24

06 APR 2024

Copies of these Notices can be obtained gratis from Mercantile Marine Department and PN Chart Depot / NAVAREA IX Headquarters, 11 Liaquat Barracks Karachi. The same can be downloaded from web: hydrography.paknavy.gov.pk.

CONTENTS

- I NOTICES TO MARINERS**
- II REPRINTS OF RADIO NAVIGATIONAL WARNINGS**
- III CORRECTIONS TO SAILING DIRECTIONS**
- IV MARINE INFORMATION**

Mariners are requested to inform the National Hydrographic Office, Naval Headquarters, 11 Liaquat Barracks, Karachi, Pakistan, immediately on the discovery of new dangers, or suspected dangers to navigation and of changes or defects in aids to navigation noticed in NAVAREA IX and of shortcomings in PAK charts or publications.

Tel : + 92-21-48506151
+ 92-21-48506152
Fax : + 92-21-99201623
+ 92-21-35867737

E-mail : hydropk@paknavy.gov.pk
hydrpk@gmail.com

Web : hydrography.paknavy.gov.pk.

MUHAMMAD WASIM
Captain Pakistan Navy
Dy HoP

National Hydrographic Office, Naval Headquarters, 11 Liaquat Barracks, Karachi 75530, PAKISTAN

PART – I
NOTICES TO MARINERS

62/24 IRAN - Light.**BA Chart 2883 (INT 7260) (Panel A, Bandar-e Pārs (Port of 'Asalūyeh))** [*previous update 1348/24*] WGS84 DATUM

Amend range of light to, 7M 27° 31'·14N., 52° 33'·28E.

Source: Admiralty Notice to Mariners No. 1474/2024

63/24 IRAN - NM Block.**BA Chart 1269 (INT 7299) (Panel B, Bandar-e Emam Khomeyni and Approaches to Bandar-e Mahshahr)** [*previous update 5017/23*] WGS84 DATUM

Insert the accompanying block, centred on: 30° 25'·3N., 49° 05'·3E.

Source: Admiralty Notice to Mariners No. 1491/2024

64/24 IRAN - Wreck. Light-beacon.**BA Chart 3173** [*previous update 1345/24*] WGS84 DATUM

Insert  Fl(2)6s5M, close E of: (a) 27° 09'·23N., 56° 15'·78E.
(a) above

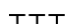
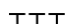
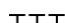
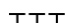
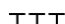
BA Chart 3599 [*previous update 5027/23*] WGS84 DATUM

Insert  Fl(2)6s5M, close E of: (a) 27° 09'·23N., 56° 15'·78E.
(a) above

Source: Admiralty Notice to Mariners No. 1527/2024

65*/24 UNITED ARAB EMIRATES - Restricted area.*Note:* Former Notice 271(P)/22 (PAK Notice 15(P)/22) is cancelled.**BA Chart 2442** [*previous update 4144/23*] WGS84 DATUM

Insert the accompanying block, centred on: 25° 18'·3N., 54° 38'·0E.

BA Chart 2837 (INT 7017) [*previous update 1348/24*] WGS84 DATUMInsert circular limit of restricted area , fishing and diving prohibited, radius 3·5M 25° 18'·3N., 54° 40'·0E.**BA Chart 2887 (INT 7232)** [*previous update 1348/24*] WGS84 DATUMInsert circular limit of restricted area , fishing and diving prohibited, radius 3·5M 25° 18'·3N., 54° 40'·0E.**BA Chart 2889 (INT 7211)** [*previous update 128/24*] WGS84 DATUMInsert circular limit of restricted area , fishing and diving prohibited, radius 3·5M 25° 18'·3N., 54° 40'·0E.**BA Chart 3175 (INT 7212)** [*previous update 4144/23*] WGS84 DATUMInsert circular limit of restricted area , fishing and diving prohibited, radius 3·5M 25° 18'·30N., 54° 40'·02E.**BA Chart 3176 (INT 7216)** [*previous update 128/24*] WGS84 DATUMInsert circular limit of restricted area , fishing and diving prohibited, radius 3·5M 25° 18'·30N., 54° 40'·02E.

Source: Admiralty Notice to Mariners No. 1529/2024

66/24 IRAN - Light. Breakwater.

Note: This update is included in New Edition BA 2888, published 25 April 2024.

BA Chart 3171 [previous update 4169/23] WGS84 DATUM

Insert  Fl.G.5s5m5M & Fl.G.5s4m5M breakwater, single firm line, joining: (a) 25° 54'·78N., 57° 16'·27E.
(a) above
25° 54'·67N., 57° 16'·31E.
25° 54'·64N., 57° 16'·36E.
25° 54'·68N., 57° 16'·61E.

Source: Admiralty Notice to Mariners No. 1535/2024

67/24 UNITED ARAB EMIRATES - Legend.**BA Chart 3177 (INT 7222)** [previous update 846/24] WGS84 DATUM

Insert legend, *Buoyed Channel*, orientated NW/SE, centred on: 24° 04'·32N., 53° 35'·99E.

BA Chart 3178 (INT 7226) [previous update 921/23] WGS84 DATUM

Insert legend, *Buoyed Channel*, orientated NW/SE, centred on: 24° 04'·32N., 53° 35'·99E.

Source: Admiralty Notice to Mariners No. 1544/2024

68(T)/24 BAHRAIN - Buoy.

- The red lateral buoy, *Fl.R.3s No.24*, in position 26° 17'·100N., 50° 46'·400E. is reported unlit. (WGS84 DATUM)

BA Charts affected - 3737 (INT 7255) - 3738 (INT 7254) - 3759

Source: Admiralty Notice to Mariners No. 1518(T)/2024

PART – II**RADIO NAVIGATIONAL WARNINGS**

130/24. IRAN. Shatt Al Arab. Chart BA 3842 (INT 7292). Starboard lightbuoy No.11 Fl(2)18Sec 5M moved from 29-52.74N 048-40.94E to 29-52.58N 048-40.86E. Mariners cautioned.

131/24. Survey operation completed. Cancel Navarea IX 030/24 and this msg.

132/24. ARABIAN GULF. Saudi Arabia (Port Al Jubail). Charts BA 3718 and 3719. Following buoys reported unlit:

Buoy No 2 27 14.63N 049 58.92E
Buoy Ch 5 27 02.02N 049 41.88E

Mariners cautioned.

133/24. Zaqquq fairway west buoy operational. Cancel Navarea IX 033/24 and this msg.

134/24. CENTRAL GULF. Qatar. Charts BA 2886, 2887 and 2889. Jack up rig Emerald Driller will be moved by vessels Halul 62, SL Jaguar and Atlantic Vortex from 25-56.53N, 052-41.50E to 25-53.23N, 052-43.61E on 3 Apr 24. Mariners cautioned. Cancel this msg on 072359 UTC Apr 24.

135/24. CENTRAL GULF. Qatar. Charts BA 2523 and 2886. Geophysical survey will be conducted by vessel horizon nomad from 26-35.538N, 052-00.094E to 26-38.226N, 051-57.054E on 03 Apr 24. Mariners cautioned. Cancel this msg on 082359 UTC Apr 24.

136/24. Dredging operation in Ruwais Channel completed. Ruwais channel open for navigation with 17m depth. All buoys in Yas and Ruwais Channel relaid at charted position. Cancel Navarea IX 099/24 and this msg.

137/24. SELF CANCELLING. Navigational warnings inforce:

2021 series: 109, 224, 397, 399, 445, 448, 490 and 491.

2022 series: 027, 039, 067, 095, 102, 112, 185, 198, 220, 227, 294, 295, 311, 328, 331, 358, 443, 477, 480, 483, 489, 497, 501, 505, 506, 507 and 513.

2023 series: 025, 028, 034, 058, 067, 068, 070, 071, 094, 096, 110, 111, 116, 120, 124, 131, 135, 159, 177, 190, 201, 221, 226, 237, 245, 263, 266, 284, 293, 299, 307, 314, 315, 318, 326, 338, 340, 341, 346, 355, 359, 371, 376, 378, 398, 404, 410, 412, 415, 420, 435, 437, 439, 447, 448, 453, 455, 460, 462, 464, 467, 468, 473 and 475.

2024 series: 004, 007, 010, 011, 012, 029, 035, 037, 042, 045, 047, 048, 057, 067, 076, 087, 094, 097 101, 103, 110, 113, 115, 123, 125, 128, 130, 132, 134 and 135.

COASTAL WARNING**048/24 SELF CANCELLING.** Navigational Warnings Inforce:

2022 series: 024, 027, 060, 063, 081 and 082.

2023 series: 027, 073 and 126.

2024 series: 041 and 045.

WPGs Inforced 2024: 18

WPGs Cancelled 2024: 19

PART – IIICORRECTIONS TO SAILING DIRECTIONS**NP63 Persian Gulf Pilot (2021 Edition)****Iran - Persian Gulf -
Approaches to Khowr-e Mūsá —
Directions; wreck; buoy****234**Paragraph 9.13 3 lines 1-3 *Delete*

UKHO [NP63-No 121-Wk 14/24]

**NP64 Red Sea and Gulf of Aden Pilot
(2021 Edition)****Oman - Gulf of Masirah - Ad Duqm Port —
Limiting conditions; controlling depth****307**Paragraph 13.88 1 lines 1-2 *Replace by:*

- 1 **Controlling depth.** The approach channel is dredged to 17.5 m (2021). A depth of 17.1 m (19°41'49N 57°43'48E) lies in the entrance channel between the breakwater heads.

Omani Notices 11/18/22 and 3/4/23
[NP64-No 20-Wk 14/24]**Oman - Gulf of Masirah - Ad Duqm Port —
Harbour; development****307**Paragraph 13.90 1 *Replace by:*

- 1 **General layout.** The harbour is protected by two breakwaters about 8700 m in length. A commercial wharf handling bulk, container and project cargo is situated on the inner face of the N/S aligned main breakwater. The W part of the harbour, protected by an E/W aligned breakwater, has berths for liquid cargo. The S part of the harbour contains government and service jetties, repair yard and graving docks.

Paragraph 13.90 2 lines 1-3 *Replace by:*

- 2 **Development.** Works are in progress (2012) in the SW part of the harbour to construct liquid cargo berths and a further basin.

Omani Notices 11/18/22 and 1/1/23
[NP64-No 21-Wk 14/24]**Oman - Gulf of Masirah - Ad Duqm Port —
Directions****307**Paragraph 13.91 2 lines 1-3 *Replace by:*

- 2 **Entry.** A channel marked by light buoys (lateral) leads generally W and SSW for about 6 miles to the harbour entrance.

Omani Notice 11/18/22 [NP64-No 22-Wk 14/24]

**Oman - Gulf of Masirah - Ad Duqm Port —
Berths****307**Paragraph 13.92 1 including heading *Replace by:***Basins and berths
13.92**

- 1 **Commercial wharf** (19°40'57N 57°43'57E) on the inner face of the N/S main breakwater, has a total quayage of 2250 m with depths alongside of around 16 m.

Western basin (19°41'08N 57°41'85E) has seven berths. Berths 903-906 are situated on either side of two jetties, extending S from the E/W aligned breakwater, with a dredged depth alongside of 17 m (2021).

Omani Notice 11/18/22 [NP64-No 23-Wk 14/24]

**Oman - Maşīrah - Ra's Hīlf Tanker Berth —
Directions; wreck****310**Paragraph 13.115 2 lines 5-6 *Replace by:*

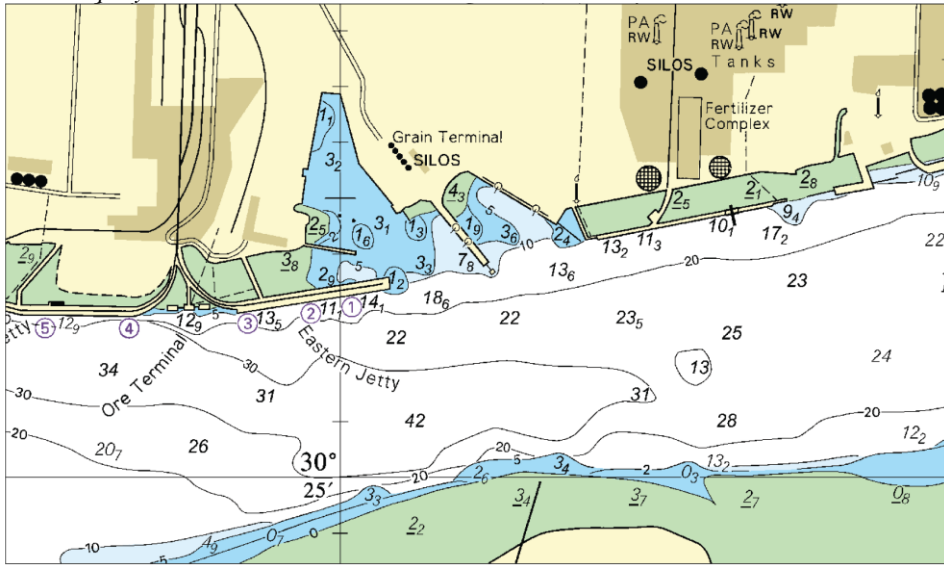
...dangers on the E side of the coastal flat. The track leads SSW towards the vicinity of the tanker berth, passing WNW of a dangerous wreck (20°43'01N 58°55'84E).

Omani Notice 12/20/22 [NP64-No 24-Wk 14/24]

PART – IVMARINE INFORMATION

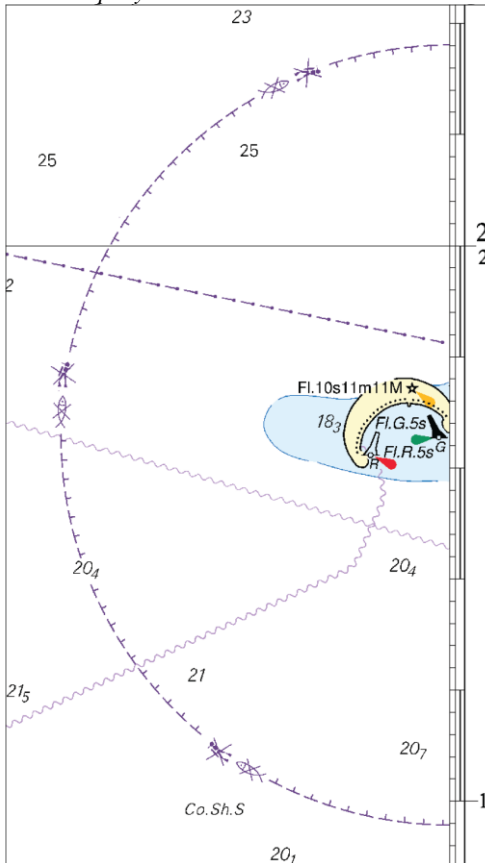
Nil

To accompany Pakistan Notice to Mariners 63/24.



Block for BA Chart No 1269

To accompany Pakistan Notice to Mariners 65/24.



Block for BA Chart No 2442

NP77, Vol D Edition 2023. Weekly Edition No. 14, Dated 04 April 2024.
 Last Updates: Weekly Edition No. 13, dated 28 March 2024.

WEST COAST. AVANT GOULET DE BREST							
D0790 FR, L1, 26000 FR, L1, 26001	- Pointe du Petit-Minou	48 20-20 N 4 36-85 W	FI(2)WR 6s	25	8 Grey round tower, white on SW Side, red top, attached to smaller white tower, black stripes 26	<i>fl 1, ec 1, fl 1, ec 3.</i> R233°-252°(19°) Bearing 233° is the approximate NE Shoreline Limit, W252°-260°(8°), R260°-307°(47°), W307°-233°(286°). For lights Northward see A1886 Intens 067.2°-068.8°(1.6°)	
*	- - Ldg Lts 068°. Front. Auxiliary light	..	Dir Q W	30	22 ..	*	
D1657-5 ES, I, 02670	- Puerto de Viavélez. Breakwater. Head	43 33-95 N 6 50-44 W	FI(3)R 9s	8	5 Red truncated conical tower 5	<i>(fl 0-5, ec 1-5) x 2, fl 0-5, ec 4-5.</i> TE 2024	
D1728-5 ES, I, 03733	NORTH-WEST COAST - Barizo. Breakwater. Head		43 18-93 N 8 52-78 W	FI G 5s	9	3 Green and white tower 5	<i>fl 0-5.</i> TE 2024
D2587 FR, L2, 17020	- S Jetty. Head	33 15-39 N 8 29-86 W	Q R	10	8 Red column on hut with white bands 4	..	
	---	..	AIS	MMSI No 992428200	
D4174 FR, L2, 32220	- Wharf. SW Corner	1 52-40 N 9 46-20 E	Iso WR 4s	13	W 8 Aluminium mast R 5 8	R000°-159°(159°), W159°-204°(45°). TE 2024	